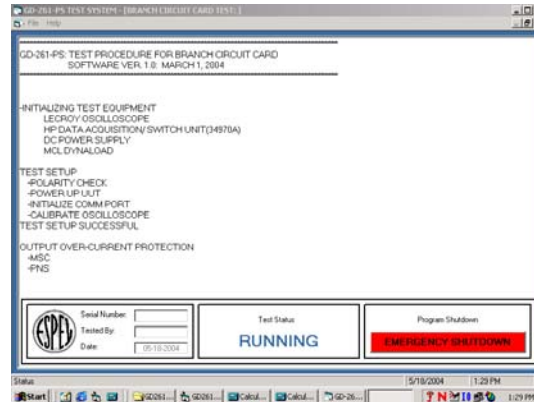


SUPPORT EQUIPMENT

GENERAL PURPOSE PRODUCTION POWER SUPPLY ATE



This ATE was developed to provide Production test capability to a variety of multi output AC to DC and DC-to-DC power supplies. It is currently used to test over 15 different types. Change over between types is less than 5 minutes.

Features:

- Performs Subassembly Testing and Final Acceptance Testing
- Pass Data stored in Database
- Standardized interface panel
- UUT specific Test Interface Box provides connection to the ATE and any specialize test circuit.

Specifications:

Electrical Specifications

- **UUT Power Sources:**
 - 0-200Vdc @ 150 Amps
 - 0-300Vdc @ 3 Amps
 - 0-60Vdc @ 3 Amps
 - 0-300Vac, 17-5000Hz, 3 phase
- **Measurements:**
 - 5-½ digit DMM
 - AC or DC voltage
 - Resistance to 1 gig-ohm
 - Ripple
 - 20 point switching multiplexer
- **DC Loads** for 10 individual outputs voltages up to 400 Vdc Power up to 3500W
- **Other**
 - 20 General Purpose Relays
 - 16 Bits Digital I/O
 - 2 Analog Reference signals
 - IEEE-488 bus

Mechanical Specifications

- **Size:** Standard height 19" rack
- **Computer:** AMD processor